

## Design & Manufacturing

Our design and engineering staff includes in-house **registered engineers** with seals for all of New England.

**Our comprehensive approach** gives you the advantage of a **cohesive component design** package.

**You will have greater project flexibility** because our **multiple product offerings** are supported by a highly capable and innovative design and engineering staff.

**Precise custom design with 3D CAD software** provides you with a computer generated preview of your project.

**Commercial & Residential  
Roof Trusses • Timber Trusses  
Wall Panels • Floor Panels  
I-Joists • Precision End Trim**

## Set Apart From the Competition by Excellence in Sales, Service, Design, and Production

**Your projects will be “in budget”** with our competitive prices and **“on schedule”** with our higher quality and more feature-rich products that make site work move quickly.

Our expert designers and engineers can design whatever you can imagine for your project. Our state-of-the-art manufacturing facilities will produce your components accurately and we'll deliver them on schedule.

Reliable Truss and Components, Inc. is a division of National Lumber Company. With the infrastructure of National Lumber and the expertise of Reliable Truss, you will be assured of receiving the best products and services.

Visit our website for more detailed information about our capabilities.

Contact us today to discuss your current or future projects.

**1-888-80-TRUSS**

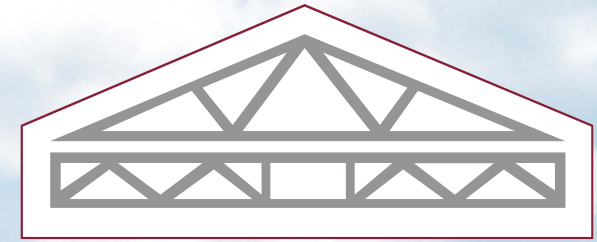
508-998-7877

200 Welby Road

New Bedford, MA 02745

**[www.reliabletruss.com](http://www.reliabletruss.com)**

**Since 1954, New England builders  
have trusted Reliable Truss  
for their structural needs.**



**RELIABLE TRUSS  
AND COMPONENTS, INC.**

**WOOD & STEEL  
Design & Manufacturing**





# Wood & Steel Framing Solutions From Sill to Rooftop

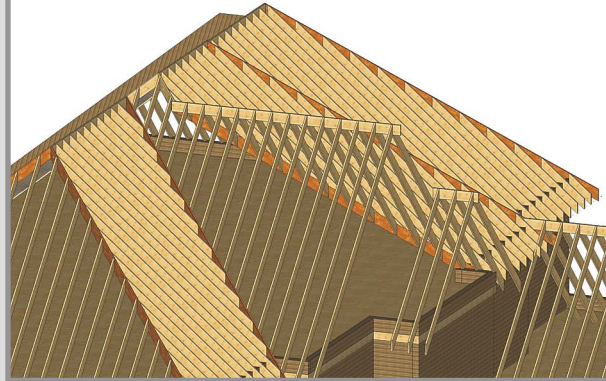
## Wall Panels:

- Window and Door Openings
- Delivered on Flat Bed Truck
- Fast, Efficient Building Method
- Reduces Jobsite Waste



## Pre-cut Building Materials:

- Full Lifts Cut to Millimeter Precision
- Floor Joists and Rafters Cut
- Layouts for Complicated Roofs
  - Rafters Packaged by Valley Sets
  - Rafters Labeled



## Steel Roof Trusses:

- Custom Roof Shapes
- Light Gauge Steel Framing
- Alpine TrusSteel Technology



## Wood Roof Trusses:

- Custom Roof Shapes
- MiTek Connector Plates



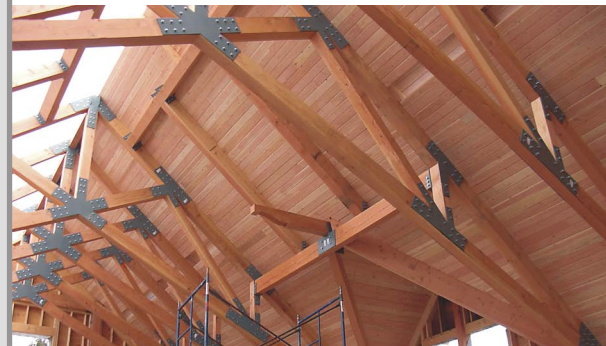
## Floor Panels:

- Pre-assembled and Shipped to Site
- Labeled Placement Plan
- Faster Build Times
- No Wasted Material to Discard



## Timber Trusses and Brackets:

- Shipped as a Kit or Pre-assembled
- Steel Plates, Hidden Fasteners or Wooden Pegs
- Price Varies Based on Material, Size, and Style
- Timber, Glulam, or Versalam



## Precise, On-Time Deliveries:

- Throughout New England Region
- Skilled Narrow Access Maneuvering
- Moffets For Precise Placement

